

# 106-101 Lozenge Anti-Skate Stud



Above. Shown with attractive machine finish

## Description

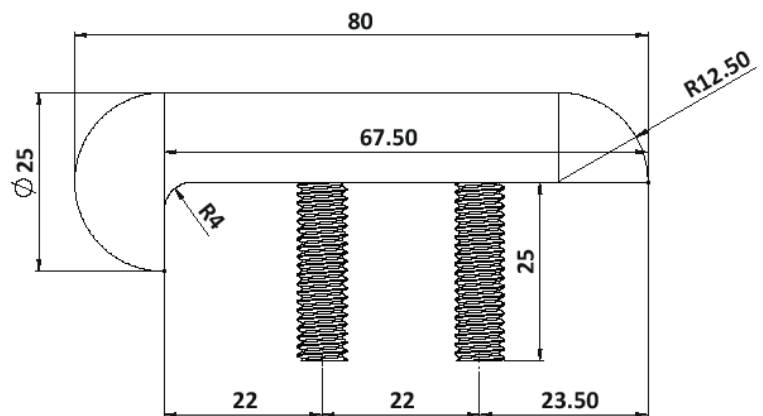
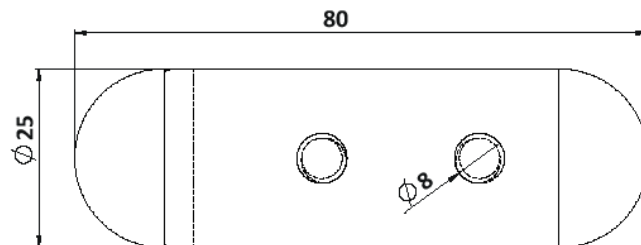
Manufactured from 316 grade steel. Satin polish finish as standard. Constructed from non corrosive material. Decorative feature anti-skating device. 2no. M8 studs to be resin fixed to concrete, stone or timber.

## Dimensions

25mm $\phi$   
80mm Overall length + 12.5mm height  
4mm Internal radius

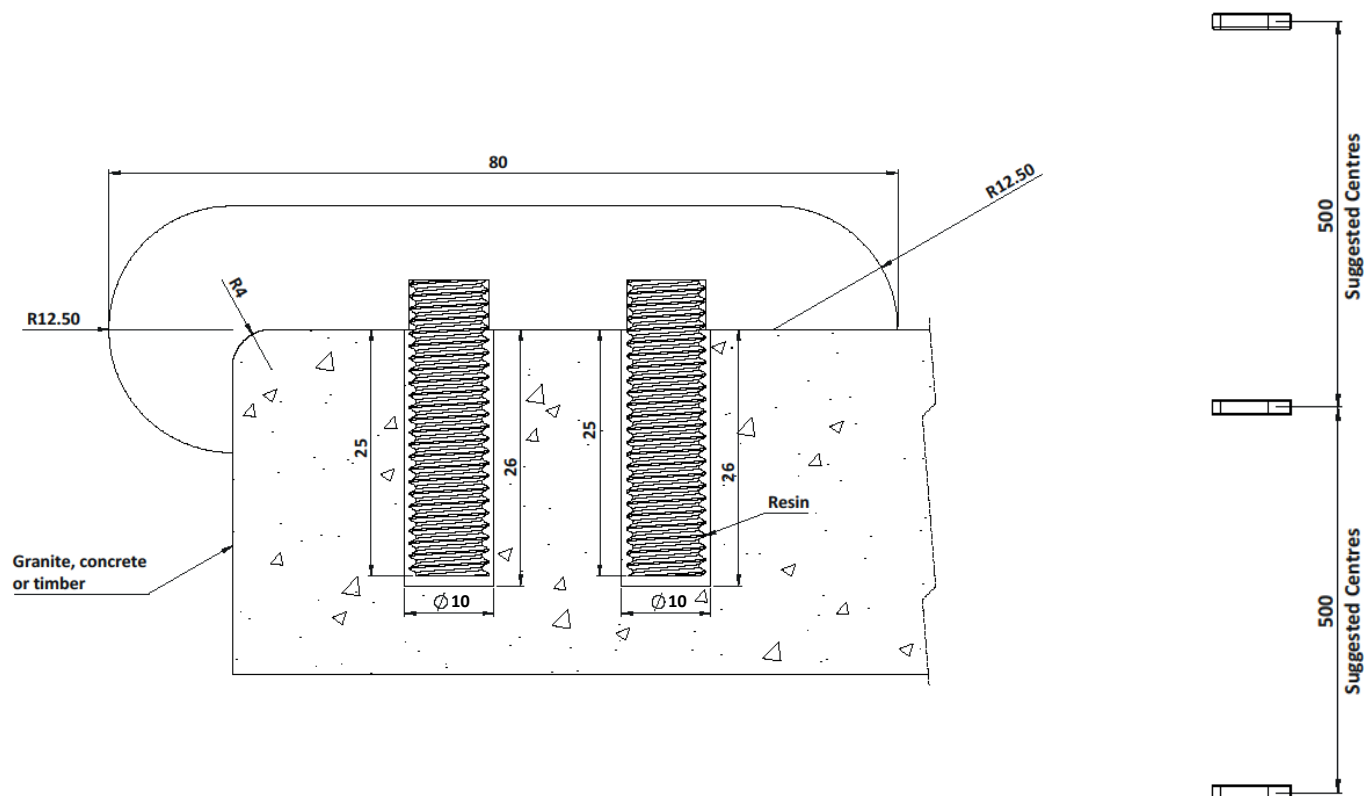
## Options

Specify required internal radius to suit edge of base product.  
304 Grade stainless steel  
Bright polish finish  
Bespoke sizing  
Full installation service



# 106-101 Lozenge Anti-Skate Stud

## Installation



### Installation

1. Drill 2no. holes 10mm in diameter to the depths shown above.
2. Remove dust and debris caused by drilling.
3. Following the product guidelines heat the Polymer Modified Adhesive and pour a sufficient amount to fill the drilled hole.
4. Push the stud into the hole firmly ensuring an edge seal around the entire stud
5. Allow a few minutes for the Polymer Modified Adhesive to set.

### Cleaning & Maintenance

*This product is designed for all weather exposure requiring only minimal maintenance as detailed below.*

Stainless Steel: Manufactured from premium grade stainless steel. Maintenance free, inspect fixing every 6 months. Add additional Adhesive where required.

106-101 Lozange Anti-Skate Stud

