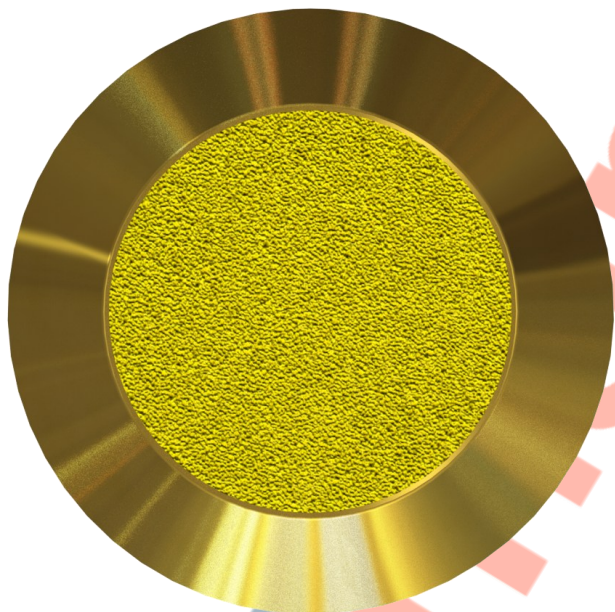


## DATASHEET

# Brass Tactile Stud

## ANTI-SLIP TAPE INSERT



**Above.** Shown with machined finish

### Description

Manufactured from Brass.  
Machined polish finish as standard.  
Constructed from non corrosive material.  
Long Service life. To be installed onto finished surfaces.

### Dimensions

D1: 25mm $\varnothing$  x 5mm thick top  
D2: 15mm  
M6 x 12mm machined pin

### Options

Sizes 15, 25, 30 & 35mm

#### Material Options:

Bronze - 316L S/S - 304 S/S

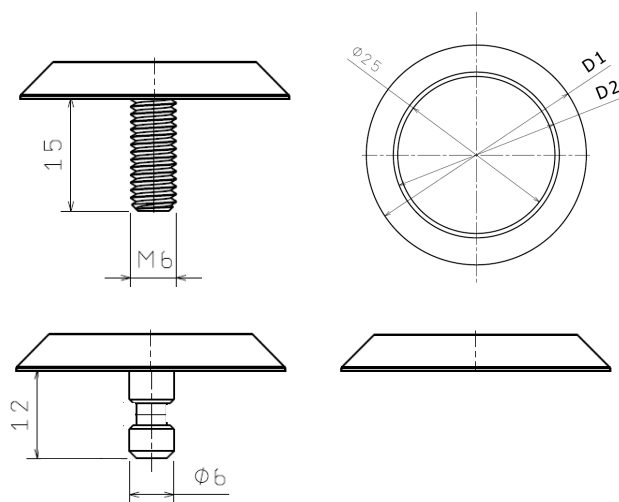
#### Fixing Pin Options

Self adhesive - Welded pin - Machined pin -

No pin

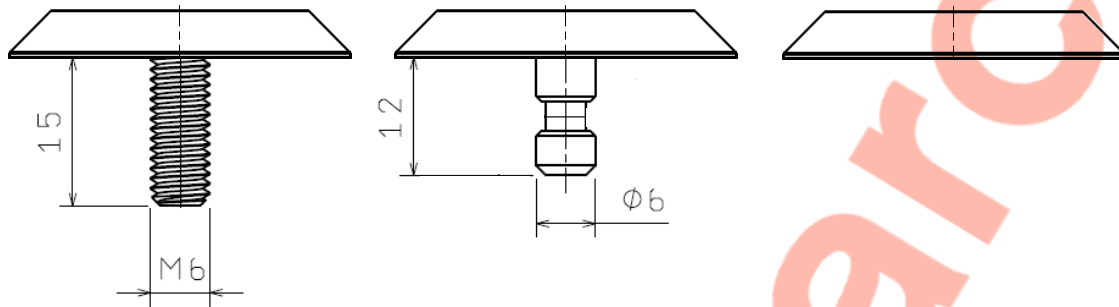
Full installation service

### Colour Options



# Brass Tactile Stud

## ANTI-SLIP TAPE INSERT



### Installation Welded Pin

1. Drill holes 7mm dia x 16mm depth.
2. Remove dust and debris caused by drilling.
3. Following the product guidelines, screw the nozzle on, and press the trigger - the two part resin will mix in the nozzle. Pour a sufficient amount to fill the drilled hole.
4. Push the stud into the hole firmly ensuring an edge seal around the entire stud
5. Allow a few minutes for the Polymer Modified Adhesive to set.

### Installation Machined Pin

1. Drill holes 7mm dia x 13mm depth.
2. Remove dust and debris caused by drilling.
3. Following the product guidelines, screw the nozzle on, and press the trigger - the two part resin will mix in the nozzle. Pour a sufficient amount to fill the drilled hole.
4. Push the stud into the hole firmly ensuring an edge seal around the entire stud
5. Allow a few minutes for the Polymer Modified Adhesive to set.

### Installation Self Adhesive

1. Prep area where stud is to be situated by using a grease and dirt remover, i.e white spirits. Then let dry thoroughly.
2. Once area is dried, peel backing to stud off and press down firmly.

Note: We highly recommend only using the self-adhesive studs on tiled floors.

For layout suggestions please refer to the below.

<https://www.studmarc.com/knowledge-base/how-far-apart-should-tactile-studs-be-installed-from-each-other/>

DATASHEET

## Brass Tactile Stud

ANTI-SLIP TAPE INSERT

