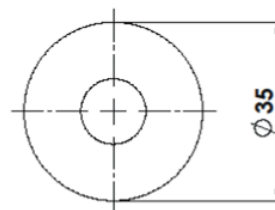


600-101 Cone Top Anti-Sitting Stud



Above. Shown with machined finish



Description

Manufactured from 316 Stainless Steel.

Machined polish finish as standard.

Constructed from non corrosive material.

Long Service life.

To be installed flush with the ground

Dimensions

35mmø x 50mm tall

30mm long x 8mmø threaded stud

Options

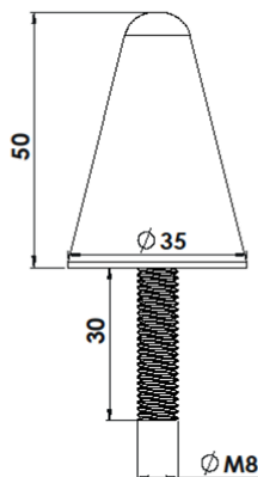
Ball version

Fixing Stud Lengths

30mm - 100mm

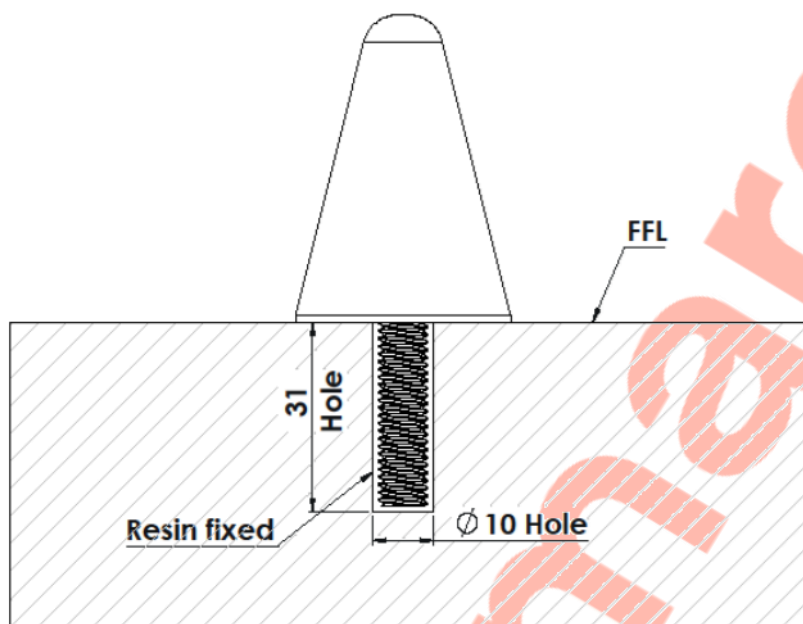
Material Options

Bronze - Brass - Aluminium



Full installation service - POA

600-101 Cone Top Anti-Sitting Stud



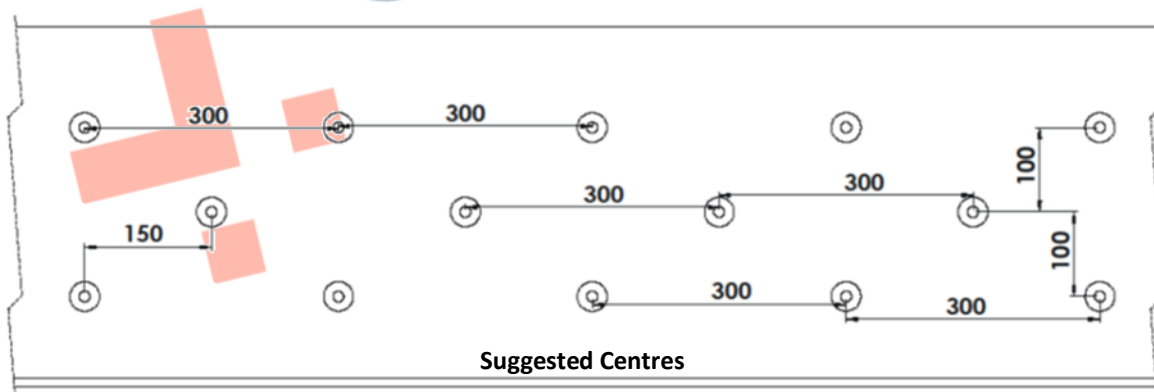
Installation

1. Drill hole 10mm in diameter to the 31mm depth shown above.
2. Remove dust and debris caused by drilling.
3. Following the product guidelines apply a sufficient amount of Studmarc Superbond Epoxy Resin to half fill the drilled hole.
4. Push the stud into the hole firmly ensuring an edge seal around the entire stud
5. Allow a few minutes for the Polymer Modified Adhesive to set.

Cleaning & Maintenance

This product is designed for all weather exposure requiring only minimal maintenance as detailed below.

316 Stainless Steel: Manufactured from 316 Stainless Steel. Maintenance free, inspect fixing every 6 months. Add additional adhesive where required.



DATASHEET

600-101 Cone Top Anti-Sitting Stud

