

## DATASHEET

# 202-202 Low Dome Plain Demarcation Stud, 40mm



**Above.** Shown with machined finish

### Description

Manufactured from 316 Stainless Steel.

Machined polish finish as standard.

Constructed from non corrosive material.

Long Service life.

To be installed onto finish surface.

### Dimensions

40mm $\varnothing$  x 5mm thick top

50mm long x 8mm $\varnothing$  threaded stud

### Options

Diameter options: 15mm - 120mm

### Fixing Pin Options

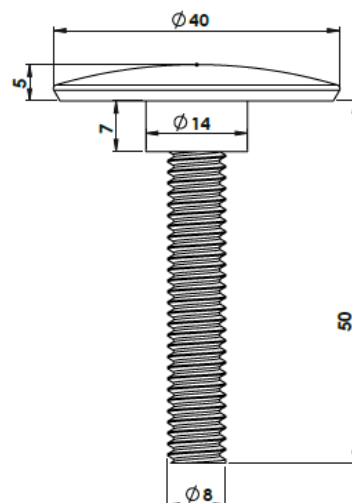
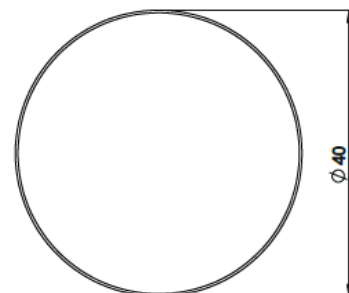
Self-adhesive - Welded pin - Machined pin - No pin

### Finishing Options

Burnt - Bright Polish - Sandblasted - Engraving - Laser Etching -  
Anti-Slip design suitable for car parks and public realm

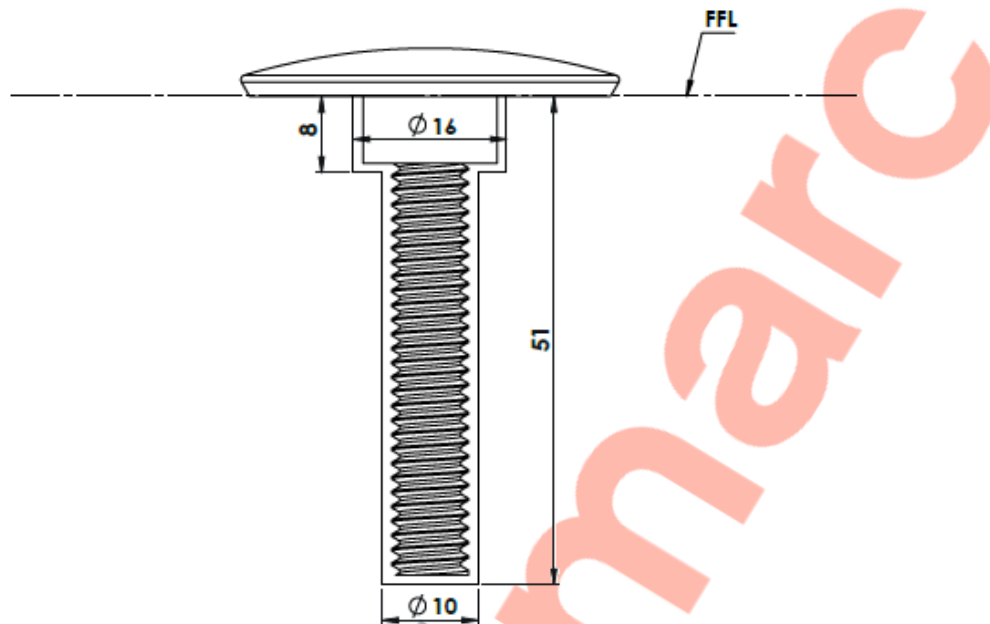
### Material Options

Brass - Bronze - Aluminium



**Full installation service - POA**





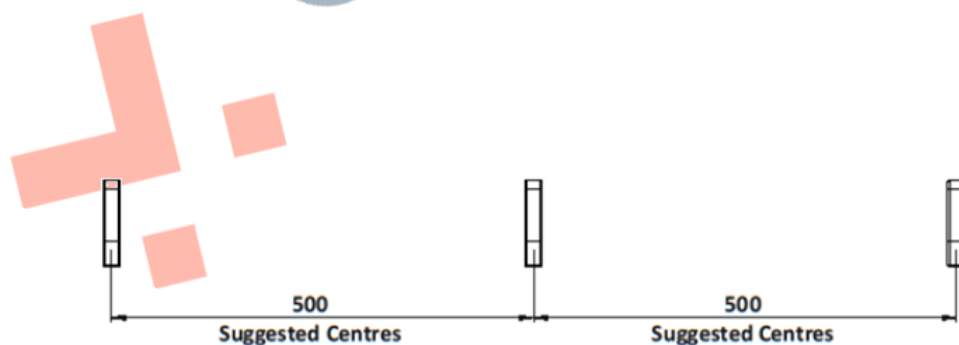
## Installation

1. Drill holes 10mm in diameter and 16mm in diameter to the depths shown above.
2. Remove dust and debris caused by drilling.
3. Following the product guidelines, found on the Resin tube, pour a sufficient amount to fill the drilled hole.
4. Push the stud into the hole firmly ensuring an edge seal around the entire stud
5. Allow a few minutes for the Polymer Modified Adhesive to set.

## Cleaning & Maintenance

*This product is designed for all weather exposure requiring only minimal maintenance as detailed below.*

Stainless Steel: Manufactured from premium Stainless Steel. Maintenance free, inspect fixing every 6 months. Add additional adhesive where required.



DATASHEET

202-202 Low Dome Plain Demarcation Stud, 40mm

