

DATASHEET

202-202 316 S/S Demarcation Stud, 40mm



Above. Shown with machined finish

**Description**

Manufactured from 316 Stainless Steel.

Machined polish finish as standard.

Constructed from non corrosive material.

Long Service life.

To be installed onto finish surface.

**Dimensions**

40mm $\phi$  x 5mm thick top

50mm long x 8mm $\phi$  threaded stud

**Options**

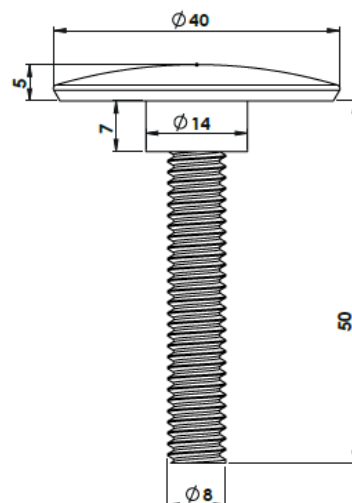
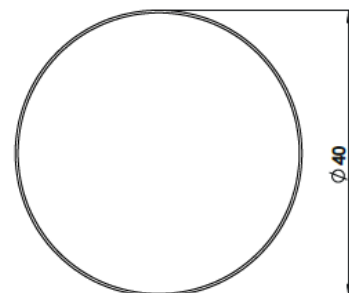
Etched, engraved, printed or bright polished finish

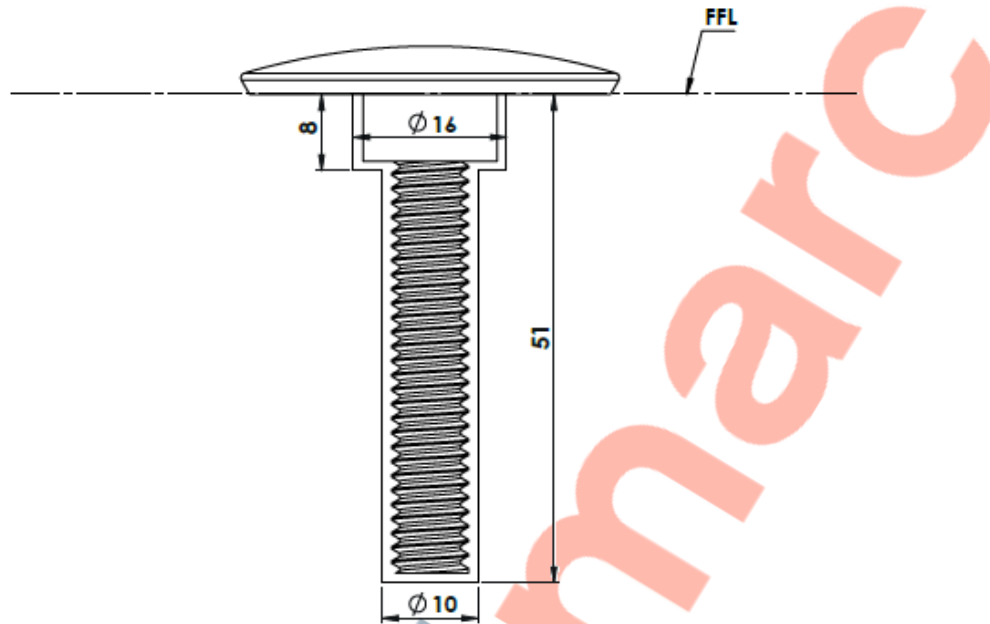
Diameter options 20mm - 120mm

Anti-slip topped version suitable for off-highway use such as car parks and walkways

Brass, Bronze & Aluminium versions

Full installation service - POA





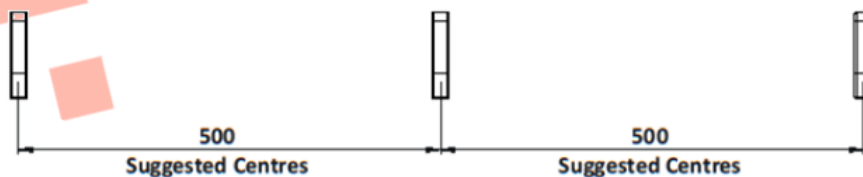
### Installation

1. Drill holes 10mm in diameter and 16mm in diameter to the depths shown above.
2. Remove dust and debris caused by drilling.
3. Following the product guidelines heat the Polymer Modified Adhesive and pour a sufficient amount to fill the drilled hole.
4. Push the stud into the hole firmly ensuring an edge seal around the entire stud
5. Allow a few minutes for the Polymer Modified Adhesive to set.

### Cleaning & Maintenance

*This product is designed for all weather exposure requiring only minimal maintenance as detailed below.*

Stainless Steel: Manufactured from premium Stainless Steel. Maintenance free, inspect fixing every 6 months. Add additional adhesive where required.



DATASHEET

202-202 316 S/S Demarcation Stud, 40mm

