

## DATASHEET

# 202-201 Low Dome Plain Top Demarcation Stud , 25mm



**Above.** Shown with machined polish finish

### Description

Manufactured from Brass.

Machined polish finish as standard.

Constructed from non corrosive material.

Long Service life.

To be installed flush with the ground

### Dimensions

25mmø x 4mm thick top

25mm long x 10mmø threaded stud

### Options

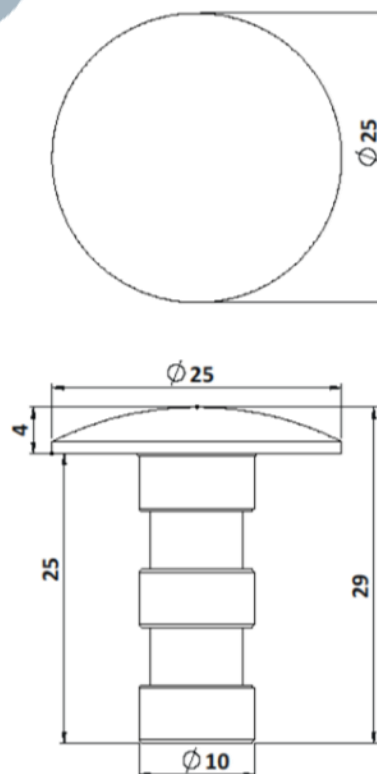
Diameter options 20 - 120mm

### Material Options

Aluminium - Bronze - 316 S/S

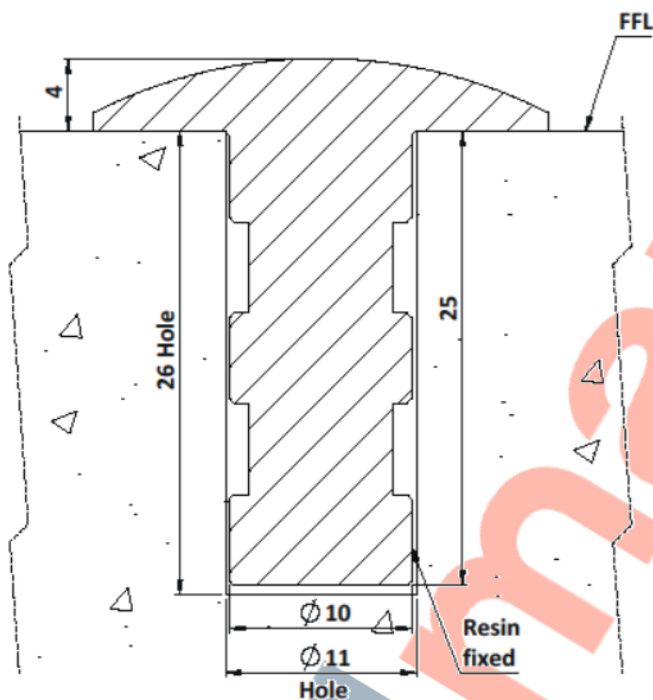
### Finishing Options

Burnt - Bright Polish - Sandblasted - Anti-Slip



**Full installation service - POA**



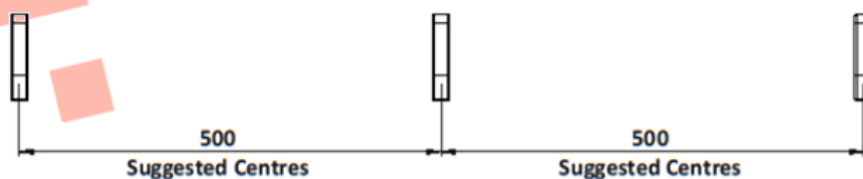
**202-201** Low Dome Plain Top Demarcation Stud , 25mm**Installation**

1. Drill holes 11mm in diameter to the depths shown above.
2. Remove dust and debris caused by drilling.
3. Following the product guidelines heat the Polymer Modified Adhesive and pour a sufficient amount to fill the drilled hole.
4. Push the stud into the hole firmly ensuring an edge seal around the entire stud
5. Allow a few minutes for the Polymer Modified Adhesive to set.

**Cleaning & Maintenance**

*This product is designed for all weather exposure requiring only minimal maintenance as detailed below.*

Brass: Manufactured from premium grade Brass. Maintenance free, inspect fixing every 6 months. Add additional adhesive where required.



DATASHEET

**202-201** Low Dome Plain Top Demarcation Stud , 25mm

