

201-100 Plain Flush Fit Demarcation Stud, 25mm



Above. Shown with machined finish

Description

Manufactured from 316 Stainless Steel.
Machined polish finish as standard.
Constructed from non corrosive material.
Long Service life.
To be installed onto finished surfaces.

Dimensions

25mm \varnothing x 4mm thick top
25mm long x 10mm \varnothing threaded stud

Options

Diameter options: 15mm - 100mm

Material Options:

Brass - Aluminium - Bronze - 304 S/S

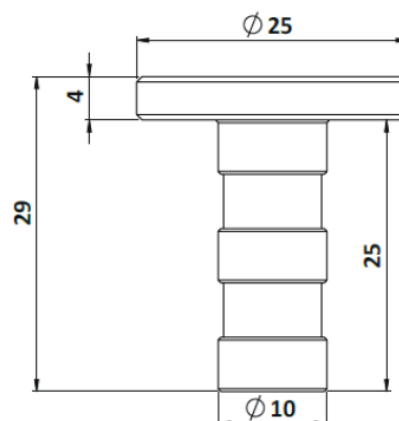
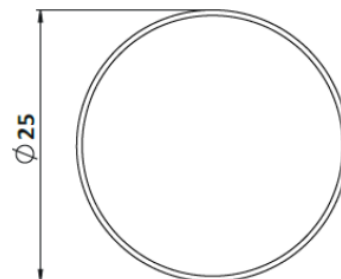
Fixing Pin Options:

Self-adhesive - Welded Pin - No Pin

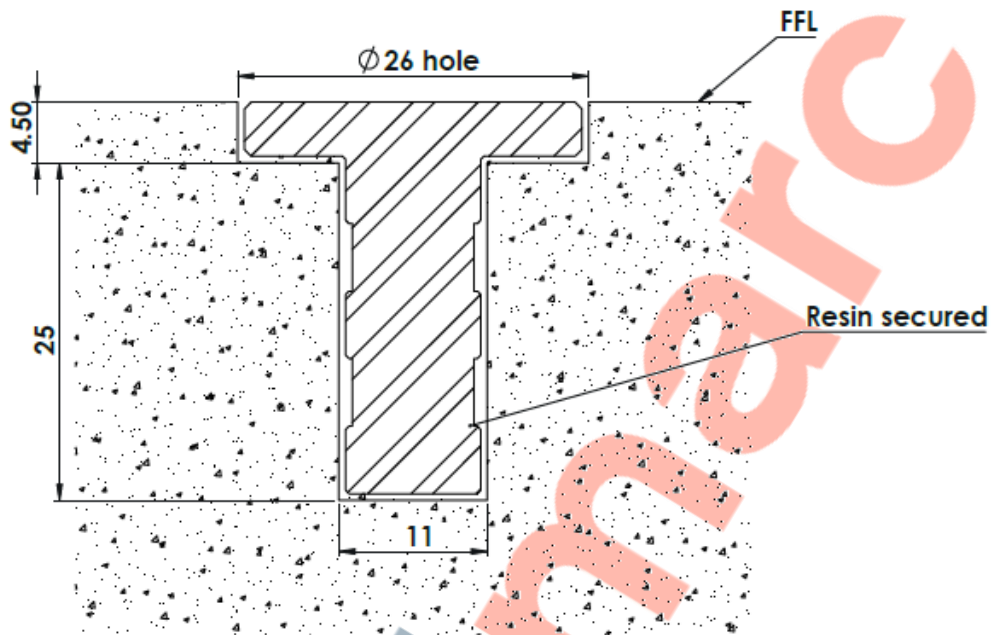
Finishing Options

Burnt - Bright Polish - Sandblasted

Full installation service - POA



201-100 Flush Fit Demarcation Stud Installation



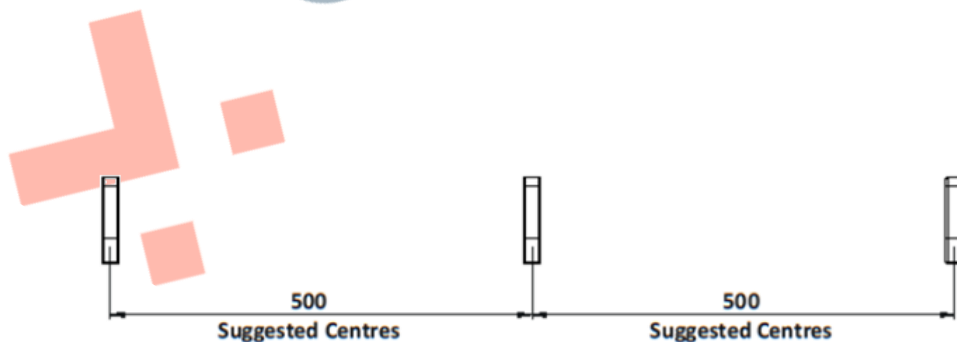
Installation

1. Drill holes 11mm & 26mm in diameter to the depths shown above.
2. Remove dust and debris caused by drilling.
3. Following the product guidelines, found on the Resin tube, pour a sufficient amount to fill the drilled hole.
4. Push the stud into the hole firmly ensuring an edge seal around the entire stud
5. Allow a few minutes for the Polymer Modified Adhesive to set.

Cleaning & Maintenance

This product is designed for all weather exposure requiring only minimal maintenance as detailed below.

Stainless Steel Manufactured from premium Stainless Steel. Maintenance free, inspect fixing every 6 months. Add additional adhesive where required.



DATASHEET

201-100 Plain Flush Fit Demarcation Stud, 25mm

