

DATASHEET

200-301 Cross Hatch 316 Stainless Steel Tactile Stud, 25mm



Above. Shown with machined polished finish

Description

Manufactured from 316 Stainless Steel.
Machined polish finish as standard.
Constructed from non corrosive material.
Long Service life. Comes with a chamfered edge and anti slip grooves.

Dimensions

25mm \varnothing x 30mm x 5mm thick top
M10 thread

Options

Diameter option 20mm - 120mm

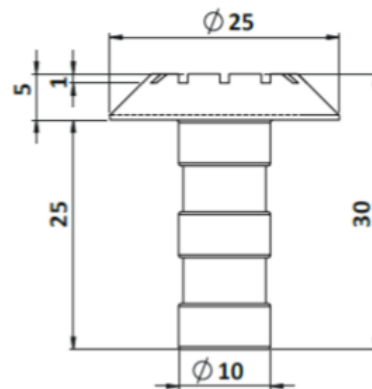
Material Options

Aluminium - Brass - Bronze

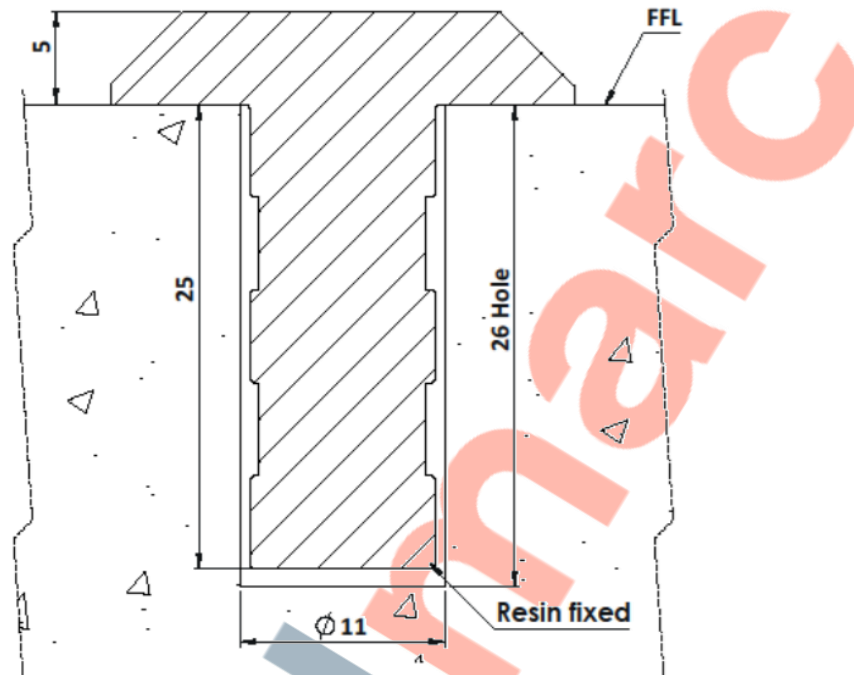
Finishing Options

Burnt - Bright Polish - Sandblasted - Plain Top

Full installation service - POA



200-301 Cross Hatch Tactile Stud Installation



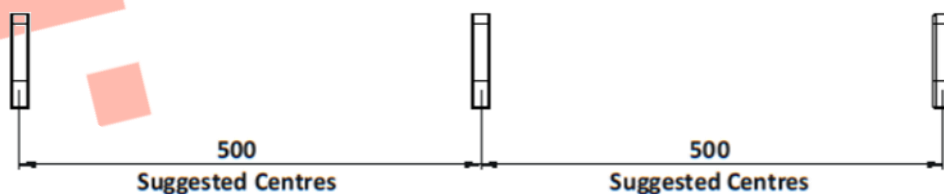
Installation

1. Drill holes 11mm in diameter to the depths shown above.
2. Remove dust and debris caused by drilling.
3. Following the product guidelines, found on the Resin tube, pour a sufficient amount to fill the drilled hole.
4. Push the stud into the hole firmly ensuring an edge seal around the entire stud
5. Allow a few minutes for the Polymer Modified Adhesive to set.

Cleaning & Maintenance

This product is designed for all weather exposure requiring only minimal maintenance as detailed below.

Stainless Steel: Manufactured from premium Stainless Steel. Maintenance free, inspect fixing every 6 months. Add additional adhesive where required.



DATASHEET

200-301 Cross Hatch Chamfered Tactile Stud, 25mm

