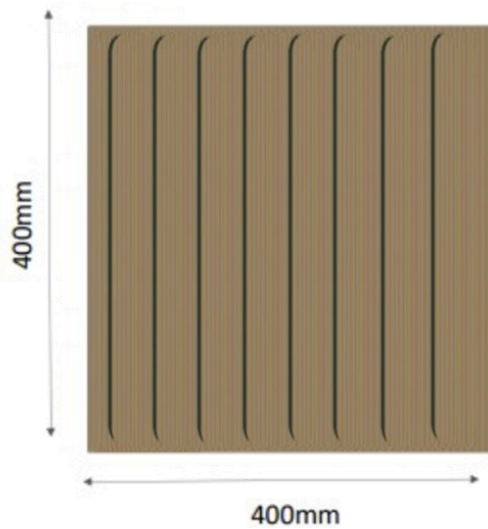


C1 Corduroy Warning Paving



Above. Shown in Buff colour

Description

This surface mounted tactile paving is designed to be fully bonded to clean, sound surfaces using a two-component structural adhesive.

Designed with raised rounded bars for tactile recognition by visually impaired as per DETR guidelines.

Benefits Include

- Quick to Install
- Easy to Install
- Cost Effective
- Conforms to Department of Transport Guidelines

Dimensions

Overall: 400mm x 400mm

Bar Height: 6mm

Box Quantity: 10no.

Size Options

Sizes: 400mm x 400mm

Colour Options:

- Charcoal
- Buff



C1 Corduroy Warning Paving Installation

PPE

- Latex gloves.
- Eye protection.
- Further PPE to be determined by Risk Assessment.

PPE

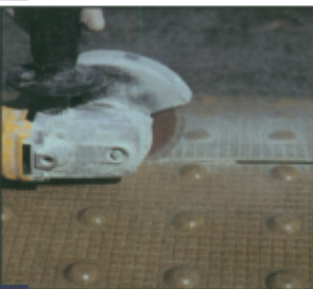
- Stiff bristled yard brush & soft sweeping brush.
- Gaffer or duct tape (50mm).
- Serrated trowel.
- Mixing paddle (75mm). Drill for mixing.
- 110mm grinder with diamond disc.
- Kiln dried sand.
- Paper towel.
- White spirit.
- Tape measure.
- 35mm roller.



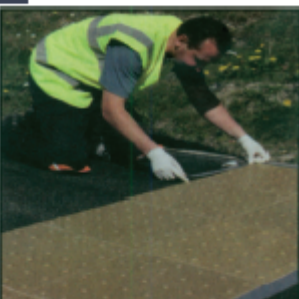
1 Surface preparation



2 Planning



3 Cutting tiles



4 Applying duct tape

DO NOT INSTALL TILES DIRECTLY ONTO NEWLY LAID ASPHALT OR CONCRETE (ASPHALT NEEDS TO BE MATURED FOR AT LEAST 7-10 DAYS PREFERABLY FOR 1 MONTH BEFORE APPLICATION) DO NOT INSTALL IN AIR TEMPERATURE BELOW 5°C OR ABOVE 40°C

Site Preparation

- Survey site and assess conditions before any installation commences.
- The surface area must be thoroughly cleaned and free from dust, loose stones or chippings and any contaminants such as chewing gum, oil or grease.
- If the substrate you are bonding to is damp/wet, please use our specially developed **MOISTURE TOLERANT ADHESIVE** and sweep away any pooling water.
- If patching, hole filling or levelling is required, a filling medium can be produced by adding fine kiln dried sand to the adhesive supplied, to produce a stiff paste. This should be allowed to completely cure before installation of the tiles begins.
- Following all surface preparation, we recommend that the surface be cleaned with a stiff bristled yard brush.

Tile Application

- Set out area to be tiled and lay out the tiles in accordance with engineer's drawings.
- Should you need to cut the tiles use a diamond disc. Place the tiles on a piece of ply or mdf and without exerting too much pressure with the cutting saw, hold the tile and pass the saw through the tile in a smooth and constant motion.
- Apply 50mm gaffer/duct tape to the external edges of the area to be tiled leaving a small border of 3 to 4mm; this will ensure full contact between the edge of the tile and the adhesive.
- Remove all tiles and re brush the area in preparation for the application of adhesive.
- If dust still remains after thoroughly brushing the surface area, it must be sealed to avoid lifting of the tiles following application.
- A Primer for concrete is available on request.

C1 Corduroy Warning Paving Installation



5 Mixing adhesive



6 Pouring adhesive



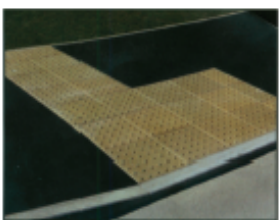
7 Screeding adhesive



8 Applying tiles



9 Broadcasting kiln dried sand



10 Completed job

Mixing the Adhesive

- Please read the Health & Safety Data Sheets and make sure you are wearing gloves and eye protection.
- Take part A and part B adhesives and using a mixing paddle, mix the two components together until they are thoroughly mixed and a uniform colour is achieved, paying particular attention to the bottom and sides of the tub.

PLEASE NOTE THAT ONCE MIXED THE ADHESIVE WILL NEED TO BE USED WITHIN 15 MINUTES.

Pouring the Adhesive

- Pour a small amount of adhesive onto the substrate.

Screeding the Adhesive

- Rake to a thin layer with the trowel. ENSURING YOU OVERLAP THE GAFFER/DUCT TAPE. We suggest applying adhesive for 2 - 3 tiles at a time, ensuring that you have sufficient adhesive filling the area to be tiled. Make sure you use one complete tub of adhesive for every 10 tiles.

Laying the Tiles

- Starting at the internal edge of the duct tape, lay the first tile ensuring even pressure is applied to the tile so as to make sure the total surface area has come into contact with the adhesive and that all the air is expelled. Do not exert too much pressure as the adhesive will form a bead at the edge of the tile that may contaminate the next tile that you lay.
- Continue to lay the tiles in this manner. Do not slide the tiles as you will create a ridge of adhesive that will contaminate the top of the tiles.
- Once you have ensured that the tile is positioned correctly; apply gentle pressure using a 35mm (approx) roller across all areas of the tile. This helps to ensure no air is trapped between the tile and adhesive.
- When you have finished laying all of the tiles, make sure that there is no bleed over or contamination of the tiles with excess adhesive. Should you need to remove adhesive from the tile surface use white spirit.
- When completely satisfied that the spacing and alignment of the tiles has remained accurate and the appearance of the tiled area is to an acceptable standard, you can broadcast a light coating of kiln dried sand onto all tile joint lines and edgings.
- When the adhesive has reached a semi gelled state you may remove the duct tape surrounding the tiles. When removing the tape always peel away from tiles so as not to allow any excess adhesive to drip onto the tiled area.

Completion

- When all of the tape and excess adhesive has been removed it is advisable to run along the adhesive edge with a scraper, spatula or knife to ensure a smooth sealed edge.
- When sufficient time has elapsed to enable the curing of the adhesive to take place and the sand is completely bonded to the adhesive, sweep the surface of the tiles with a soft brush to remove any excess sand.