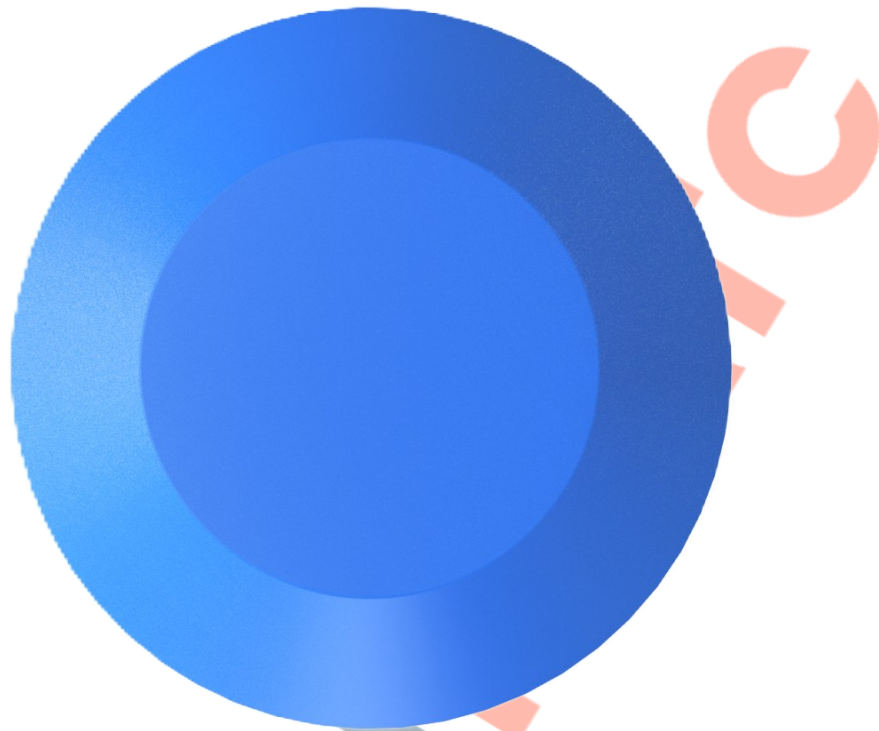


TPU SM Tactile Stud



Above. Shown in blue

Description

Manufactured from TPU (Thermoplastic Polyurethane). The tactile stud is made from hardwearing TPU to ensure fantastic performance in indoor environments. The TPU material is rigid and UV resistant to prevent colour fading over time. To be installed onto finished surfaces.

Dimensions

D1: 25mm \varnothing x 4mm thick top
M8 x 15mm machined pin

Options

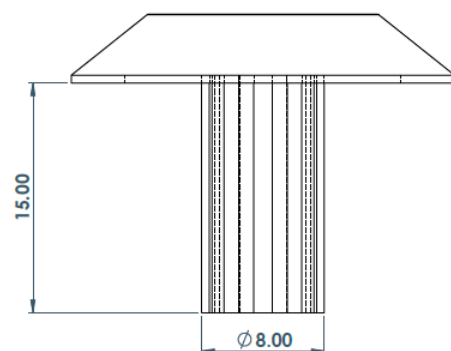
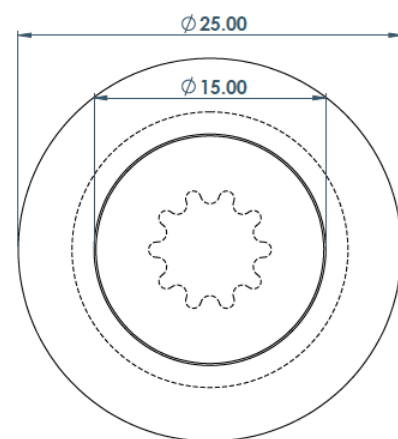
Sizes 15, 25, 30 & 35mm

Fixing Pin Options

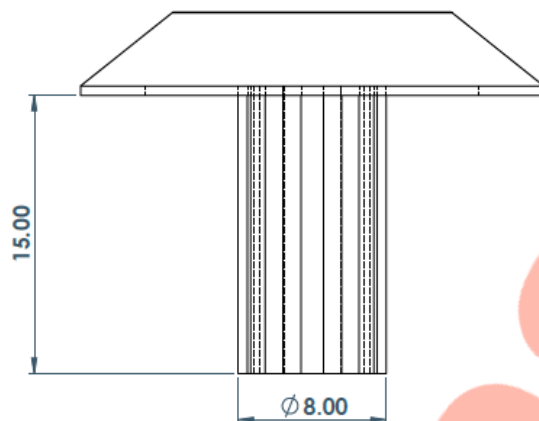
Self adhesive - Machined pin - No pin

Full installation service

Colour Options:



TPU SM Tactile Stud Installation



Installation Machined Pin

1. Drill holes 10mm dia x 16mm depth.
2. Remove dust and debris caused by drilling.
3. Following the product guidelines, screw the nozzle on, and press the trigger - the two part resin will mix in the nozzle. Pour a sufficient amount to fill the drilled hole.
4. Push the stud into the hole firmly ensuring an edge seal around the entire stud
5. Allow a few minutes for the Polymer Modified Adhesive to set.

Installation Self Adhesive

1. Prep area where stud is to be situated by using a grease and dirt remover, i.e white spirits. Then let dry thoroughly.
2. Once area is dried, peel backing to stud off and press down firmly.

Note: We highly recommend only using the self-adhesive studs on tiled floors.

For layout suggestions please refer to the below.

<https://www.studmarc.com/knowledge-base/how-far-apart-should-tactile-studs-be-installed-from-each-other/>

DATASHEET

TPU SM Tactile Stud

