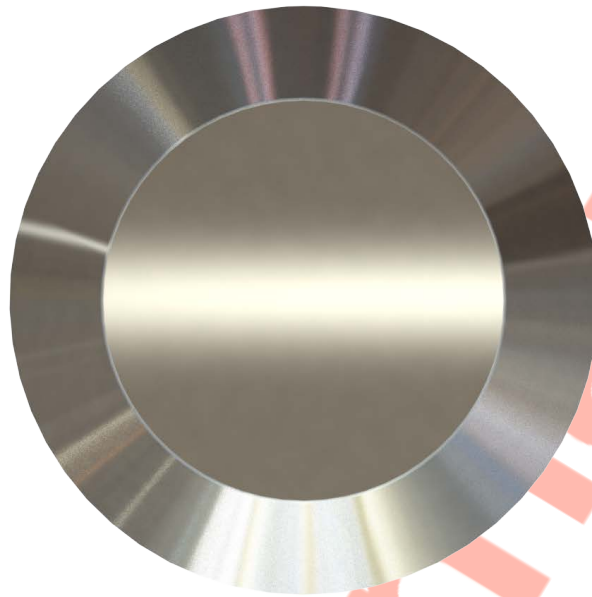


# ST 316L Stainless Steel Tactile Demarcation Stud, 25mm



**Above.** Shown with machined

## Description

Manufactured from 316L Stainless Steel.

Machined polish finish as standard.

Constructed from non corrosive material.

Long Service life.

To be installed onto finished surfaces.

## Dimensions

D1: 25mmø

D2: 15mmø x 5mm thick top

M6 x 15mm welded pin

M6 x 12mm machined pin

## Options

Diameter options: 15 - 100mm

Fixing pin length options - 12 - 80mm

## Material Options:

Brass - Aluminium - Bronze - 304 S/S

## Finishing Options

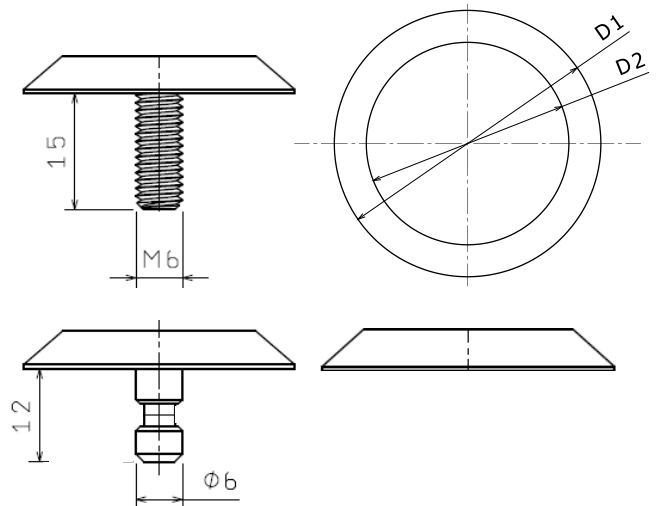
Sandblasted - Burnt - Laser Etched/

Engraved - Bright Polish - Printed Imagery

## Fixing Pin Options

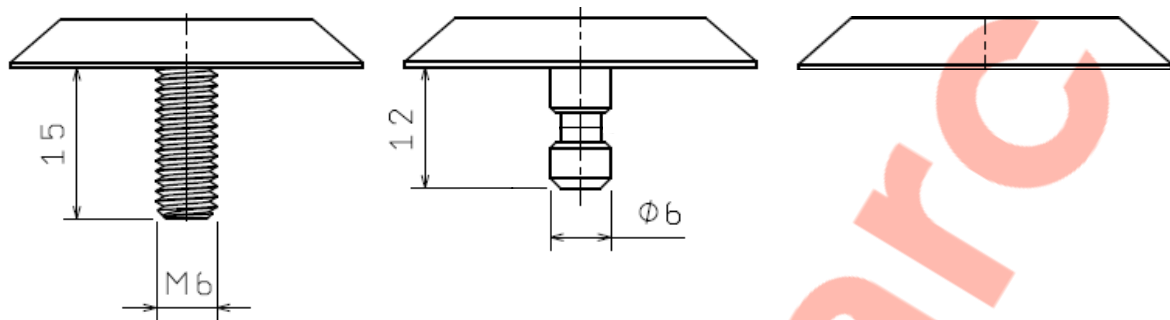
Self adhesive - Welded pin - Machined pin -

No pin



**Full installation service - POA**

# ST 316L Stainless Steel Stud Installation



## Installation Welded Pin

1. Drill holes 7mm dia x 16mm depth.
2. Remove dust and debris caused by drilling.
3. Following the product guidelines, screw the nozzle on, and press the trigger - the two part resin will mix in the nozzle. Pour a sufficient amount to fill the drilled hole.
4. Push the stud into the hole firmly ensuring an edge seal around the entire stud
5. Allow a few minutes for the Polymer Modified Adhesive to set.

## Installation Machined Pin

1. Drill holes 7mm dia x 13mm depth.
2. Remove dust and debris caused by drilling.
3. Following the product guidelines, screw the nozzle on, and press the trigger - the two part resin will mix in the nozzle. Pour a sufficient amount to fill the drilled hole.
4. Push the stud into the hole firmly ensuring an edge seal around the entire stud
5. Allow a few minutes for the Polymer Modified Adhesive to set.

## Installation Self Adhesive

1. Prep area where stud is to be situated by using a grease and dirt remover, i.e white spirits. Then let dry thoroughly.
2. Once area is dried, peel backing to stud off and press down firmly.

**Note:** We highly recommend only using the self-adhesive studs on tiled floors.

**For layout suggestions please refer to the below.**

<https://www.studmarc.com/knowledge-base/how-far-apart-should-tactile-studs-be-installed-from-each-other/>

DATASHEET

## ST 316L Stainless Steel Tactile Demarcation Stud, 25mm

