

202-201 Low Dome Smooth Stud Brass



Above. Shown with machined polish finish

Description

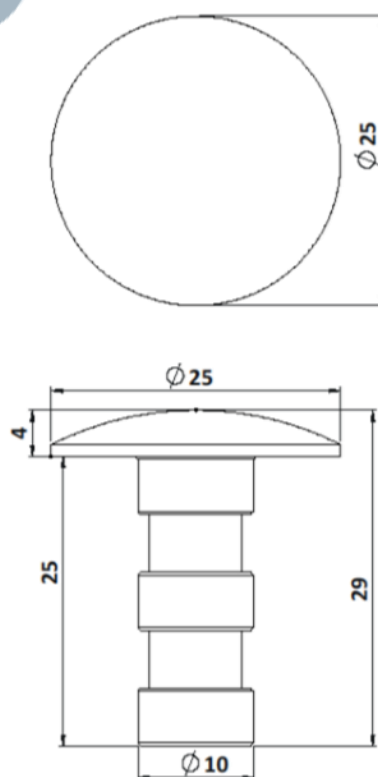
Manufactured from Brass.
Machined polish finish as standard.
Constructed from non corrosive material.
Long Service life. To be installed flush with the ground

Dimensions

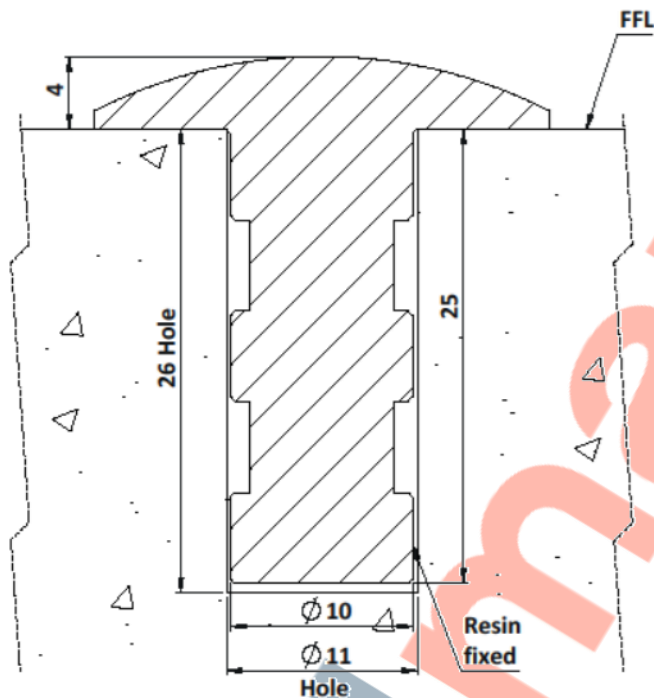
25mm \varnothing x 4mm thick top
25mm long x 10mm \varnothing threaded stud

Options

Etched or polished finish
Diameter options 20 - 120mm
Anti-slip topped version suitable for pavements and walkways
Stainless steel versions
Full installation service



202-201 Low Dome Smooth Stud Brass Installation



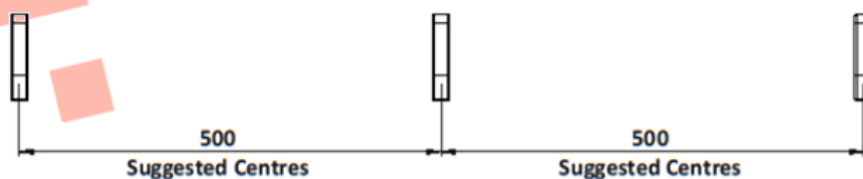
Installation

1. Drill holes 11mm in diameter to the depths shown above.
2. Remove dust and debris caused by drilling.
3. Following the product guidelines heat the Polymer Modified Adhesive and pour a sufficient amount to fill the drilled hole.
4. Push the stud into the hole firmly ensuring an edge seal around the entire stud
5. Allow a few minutes for the Polymer Modified Adhesive to set.

Cleaning & Maintenance

This product is designed for all weather exposure requiring only minimal maintenance as detailed below.

Brass: Manufactured from premium grade Brass. Maintenance free, inspect fixing every 6 months. Add additional adhesive where required.



DATASHEET

202-201 Low Dome Smooth Stud Brass

