

201-109 Flush Fit 50mm Stainless Steel



Above. Shown with machined polished finish

Description

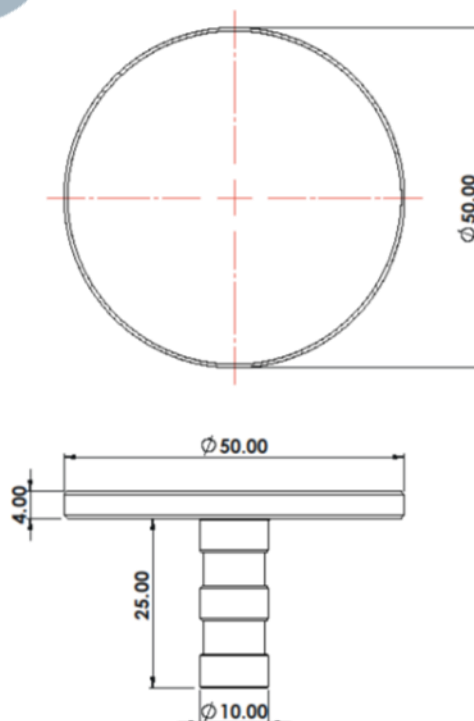
Manufactured from 316 Stainless steel.
Machined polish finish as standard. Constructed from non corrosive material. Long Service life. Comes with a smooth top.

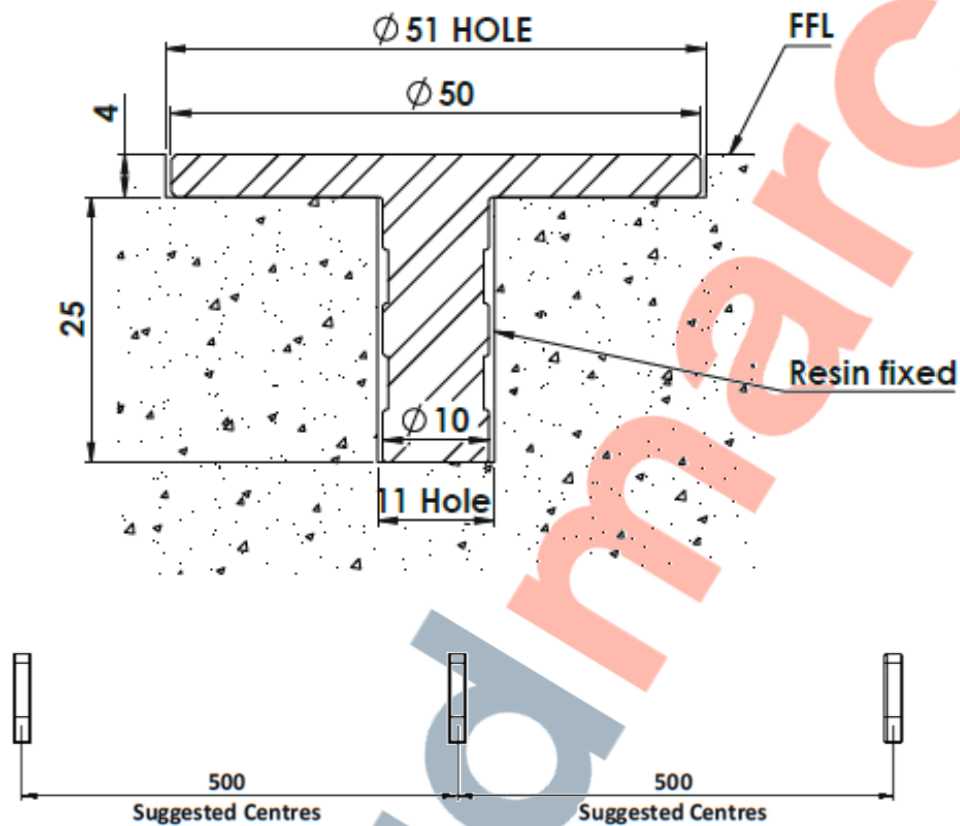
Dimensions

50mmø
4mm thick top
M10 x 25mm thread

Options

Anti slip top finish
Sizes 40, 25, 75, 90, 105 and 120mm
Brass version
Full installation service





Installation

1. Drill hole 11mm in diameter to the 25mm depth shown above.
2. Drill second 51mm hole to the 4mm depth shown above
2. Remove dust and debris caused by drilling.
3. Following the product guidelines heat the Polymer Modified Adhesive and pour a sufficient amount to fill the drilled hole.
4. Push the stud into the hole firmly ensuring an edge seal around the entire stud
5. Allow a few minutes for the Polymer Modified Adhesive to set.

Cleaning & Maintenance

This product is designed for all weather exposure requiring only minimal maintenance as detailed below.

316 Stainless Steel: Manufactured from 316 Stainless Steel. Maintenance free, inspect fixing every 6 months. Add additional adhesive where required.

DATASHEET

201-109 Flush Fit 50mm Stainless Steel

