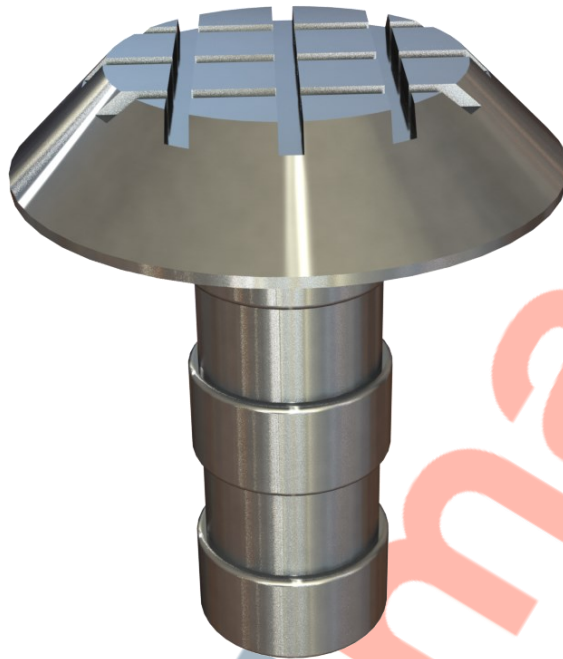


**200-301** Chamfered Anti-Slip Stud - Stainless Steel

**Above.** Shown with machined polished finish

**Description**

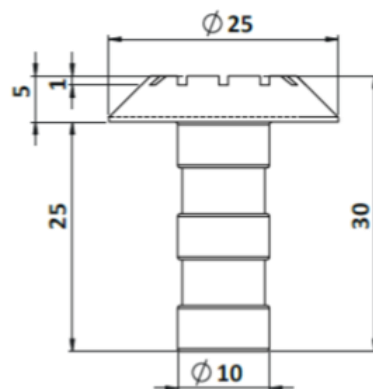
Manufactured from Stainless Steel.  
Machined polish finish as standard.  
Constructed from non corrosive material.  
Long Service life. Comes with a chamfered edge and anti slip grooves.

**Dimensions**

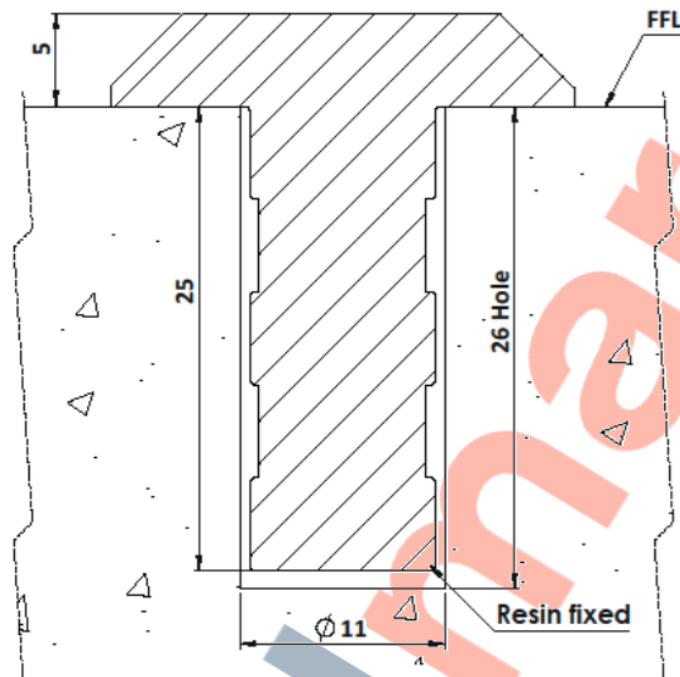
25mm $\varnothing$  x 30mm x 5mm thick top  
M10 thread

**Options**

Smooth finish  
Diameter options 20 - 120mm  
Etched Infills – Disabled, Cycleway,  
Numerical, Company or Custom  
Designs & Logos  
Brass version  
Full installation service



## 200-301 Chamfered Anti-Slip Stud - Stainless Steel Installation



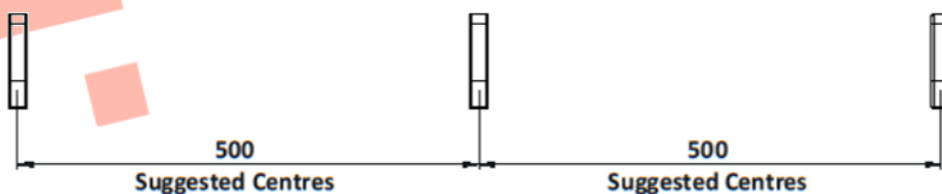
### Installation

1. Drill holes 11mm in diameter to the depths shown above.
2. Remove dust and debris caused by drilling.
3. Following the product guidelines heat the Polymer Modified Adhesive and pour a sufficient amount to fill the drilled hole.
4. Push the stud into the hole firmly ensuring an edge seal around the entire stud
5. Allow a few minutes for the Polymer Modified Adhesive to set.

### Cleaning & Maintenance

*This product is designed for all weather exposure requiring only minimal maintenance as detailed below.*

**Stainless Steel:** Manufactured from premium Stainless Steel. Maintenance free, inspect fixing every 6 months. Add additional adhesive where required.



DATASHEET

## 200-301 Chamfered Anti-Slip Stud - Stainless Steel

