

109-101 Handrail Stud



Above. Shown with attractive machine finish

Description

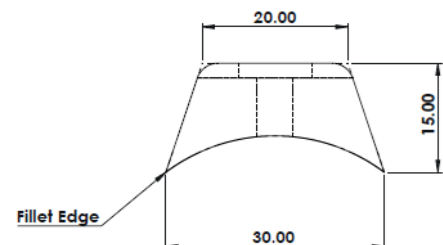
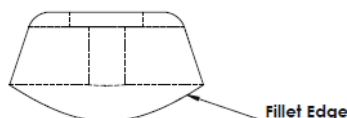
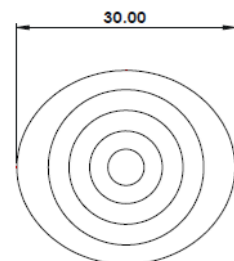
Manufactured from 316 grade steel.
Satin polish finish as standard.
Constructed from non corrosive material.
Decorative feature anti-skating device.
1no. M5 hole for fixing to rail

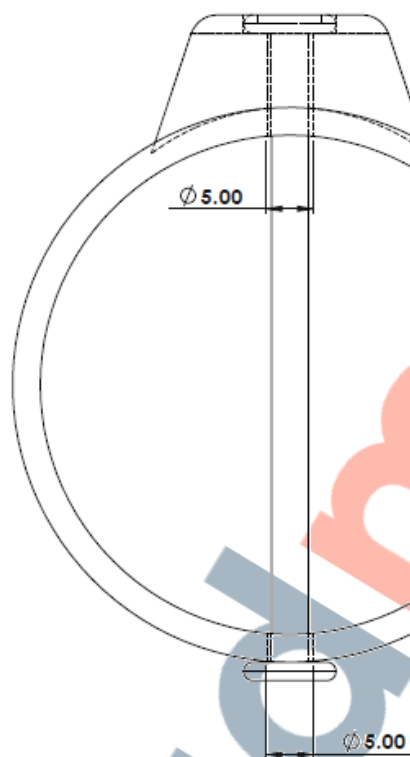
Dimensions

30mm x 27mm x 15mm

Options

Specify required internal radius to suit
edge of base product.
304 Grade stainless steel
Brass
Bespoke sizing
Full installation service





Installation

1. Drill 1no. Hole 5mm in diameter through the rail.
2. Remove dust and debris caused by drilling.
3. Insert Chicago bolt from the bottom
4. Tighten the bottom
5. Check stud is firmly in place, tighten as required

Cleaning & Maintenance

This product is designed for all weather exposure requiring only minimal maintenance as detailed below.

Stainless Steel: Manufactured from premium grade stainless steel. Maintenance free, inspect fixing every 6 months. Add additional Adhesive where required.

DATASHEET

109-101 Handrail Stud

