

109-101 Handrail Anti-Skate Stud



Above. Shown with attractive machine finish

Description

Manufactured from 316 grade steel.
Satin polish finish as standard.
Constructed from non corrosive material.
Decorative feature anti-skating device.
1no. M5 hole for fixing to rail

Dimensions

30mm x 20mm x 15mm

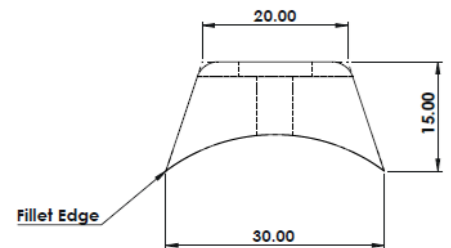
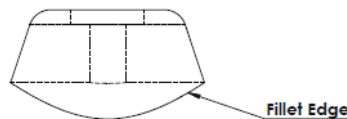
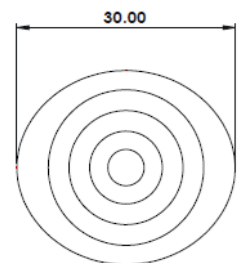
Options

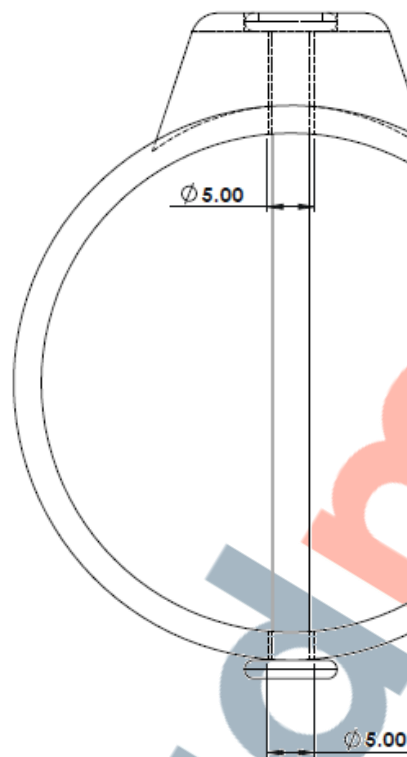
Specify required internal radius to suit edge of base product.

Material Options

304 Grade stainless steel - Brass

Full installation service - POA





Installation

1. Drill 1no. Hole 5mm in diameter through the rail.
2. Remove dust and debris caused by drilling.
3. Insert Chicago bolt from the bottom
4. Tighten the bottom
5. Check stud is firmly in place, tighten as required

Cleaning & Maintenance

This product is designed for all weather exposure requiring only minimal maintenance as detailed below.

Stainless Steel: Manufactured from premium grade stainless steel. Maintenance free, inspect fixing every 6 months. Add additional Adhesive where required.

DATASHEET

109-101 Handrail Anti-Skate Stud

